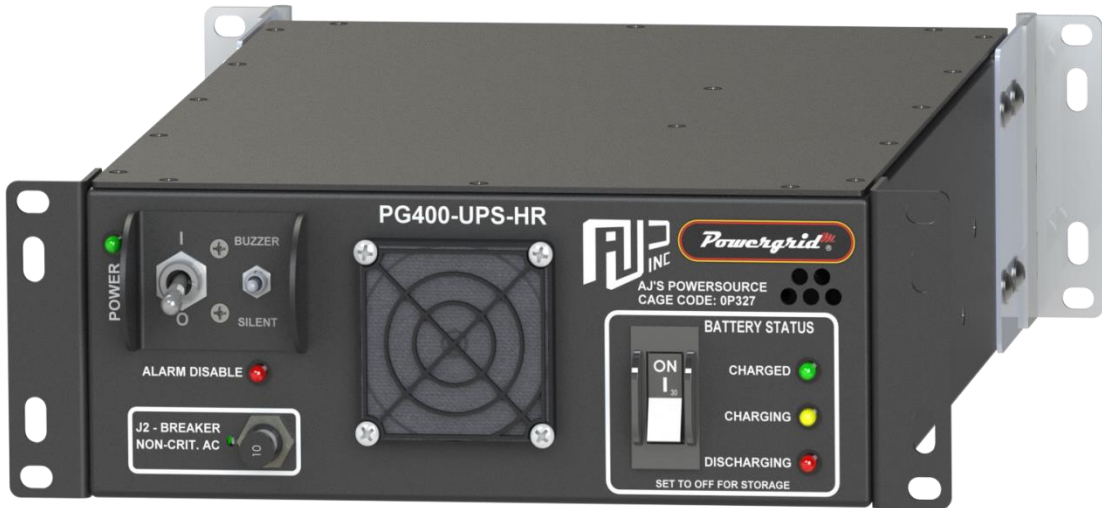


Document Number: 140418JL	Originator: Jon Landau	Date: March 2nd, 2021
---------------------------	------------------------	-----------------------

Data Sheet
PG400-UPS-HR



Document Number: 120514JL	Originator: / Sign:	Approved By: / Sign:
---------------------------	---------------------	----------------------

Warning: This document may contain technical data whose export is restricted by the Arms Export Control Act (Title 22, U.S.C. Sec 2751, et seq.) or the Export Administration Act of 1979, as amended (Title 50, U.S.C., app. 2401 et seq.) Violators of these export laws are subject to sever criminal penalties.
 Proprietary Data: The data disclosed in this document was originated in whole or in part by AJPS Inc. and is to be utilized only for the specific purposes for which it was supplied. It is not to be disclosed, transmitted or reproduced without the prior written consent of AJPS Inc.

Creation Date: 07 May 2012	Reference ECO:	Document Number Rev Level: J
----------------------------	----------------	------------------------------

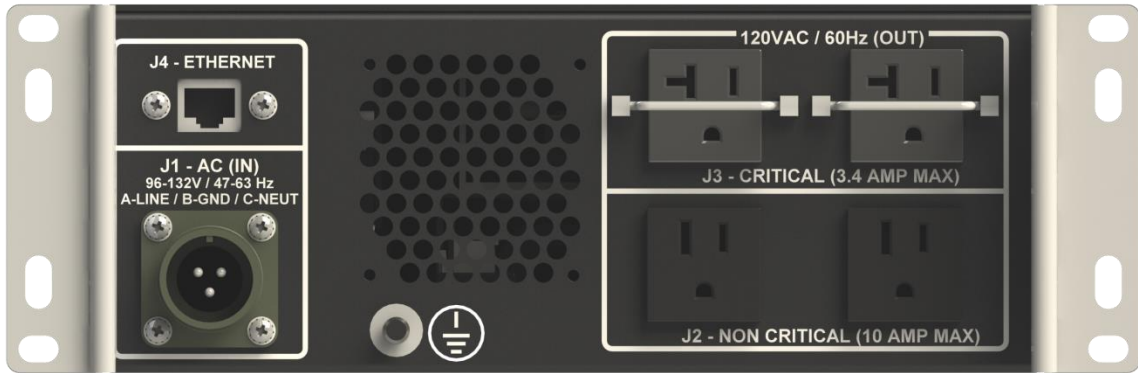
SPECIFICATION	VALUE	UNITS
AC Output		
Rated Voltage	120 Pure Sine Wave ($\pm 2\%$)	Volts AC
Frequency	60 ($\pm 0.25\%$)	Hertz
Rated Max. Current	3.4	Amps
Max. Rated Power	400	Watts
Phase	Single	
Total Harmonic Distortion	<5% (w/Resistive Load)	%
Run Time on Battery	>8 @ 25°C, 80% Load (zero output below 0C)	Minutes
Transfer Time to Battery	Instant, On-Line conversion	
AC Input		
Voltage Range (Universal)	96 – 132 (due to NEMA 5-15R receptacle pass through from input)	Volts AC
Frequency Range	47 - 63	Hertz
Nominal Current	6 @ 120Vac	Amps AC
Inrush Current (typical)	40	Amps AC
Efficiency (typical)	≥ 80	%
Power Factor (typical)	>0.95	
Leakage Current	<3 @ 120VAC	mAmps AC
Conversion	Double, On-Line	
Isolation		
AC Input to AC Output	Yes (Not on pass-through outlets J2)	
Internal Battery Module		
Rating	28	Vdc
Ampacity	2.85	Ah
Type	Lithium Iron Phosphate	
Recharge Time	3 - 4 Hours to 95% after full discharge	
Protection		
Over Load	Yes	
Output Short Circuit	Yes	
Over Temperature	Yes	
AC Input Protection	Yes	
Lightning Protection	Yes	

SPECIFICATION	VALUE	UNITS
SNMP v3	AC Input present, Battery Status (charging, discharging, charged), AC Output Active, Over Temperature	
Front Panel Indicators		
Battery Status	Green=Charged, Yellow=Charging, Red=Discharging	
Power LED	Green=Unit On	
Alarm Status Indicator	When lit RED, Alarm is disabled	
Front Panel Control		
On/Off Switch	When UP, enables UPS output and pass through AC, when in DOWN position, no AC output is present on any connectors	
Battery Disconnect	Disconnects internal battery from circuit, prevents discharge during storage, ON=battery in service, OFF=Battery disconnected(storage mode)	
Non-Critical Output Circuit Breaker	Push/Pull, 10	Amp
Alarm Disable Switch	UP means audible alarm is enabled, DOWN means audible alarm is disabled	
Connectors		
AC Output – Non-Critical (Pass Through from Input, not present on battery power)	2 x NEMA 5-15R Receptacles	J2
AC Output - Critical (active on battery power)	2 x NEMA 5-20R Receptacles (with cord retention tie bar)	J3
AC Input	MS3102E16-10P. A= Line, B=Ground, C =Neutral	J1
Ethernet Port	Standard RJ-45	J4
Safety Ground	¼ -20 Stud (Rear Panel)	
Environmental		
Operating Temperature Range	-20 to +54 (75% Load Derating (300W) from 50 to 54)*	°C
Storage Temperature Range	-40 to +70*	°C
Operating Humidity	95 non-condensing*	%
Altitude	10, 000 (Operating) / 40,000 (Non-Operating)*	feet
Fungus	No fungus promoting materials used	
Sand and Dust	MIL-STD-810G* (Front panel re-useable filter installed)	
Vibration	MIL-STD-810G, Method 514.6, Category 20, Figure 514.6C-3, Table 514.6C-VI*	
Functional Shock	MIL-STD-810G, Method 516.6, Procedure I, Section 4.6.2.3 and Table 516.6-I, Ground Equipment*	
Other Specifications		
Startup Time	<30	Seconds
Cooling	Front Panel Intake & Rear Exhaust Airflow	
MIL-STD 461F*	Compliant CE102, CS114/115/116, CS101 & RS103	
MTBF	>102,000 (Calculated per MIL-HDBK-217)	Hours
	* Designed to meet, formal report requires lab testing at additional expense	

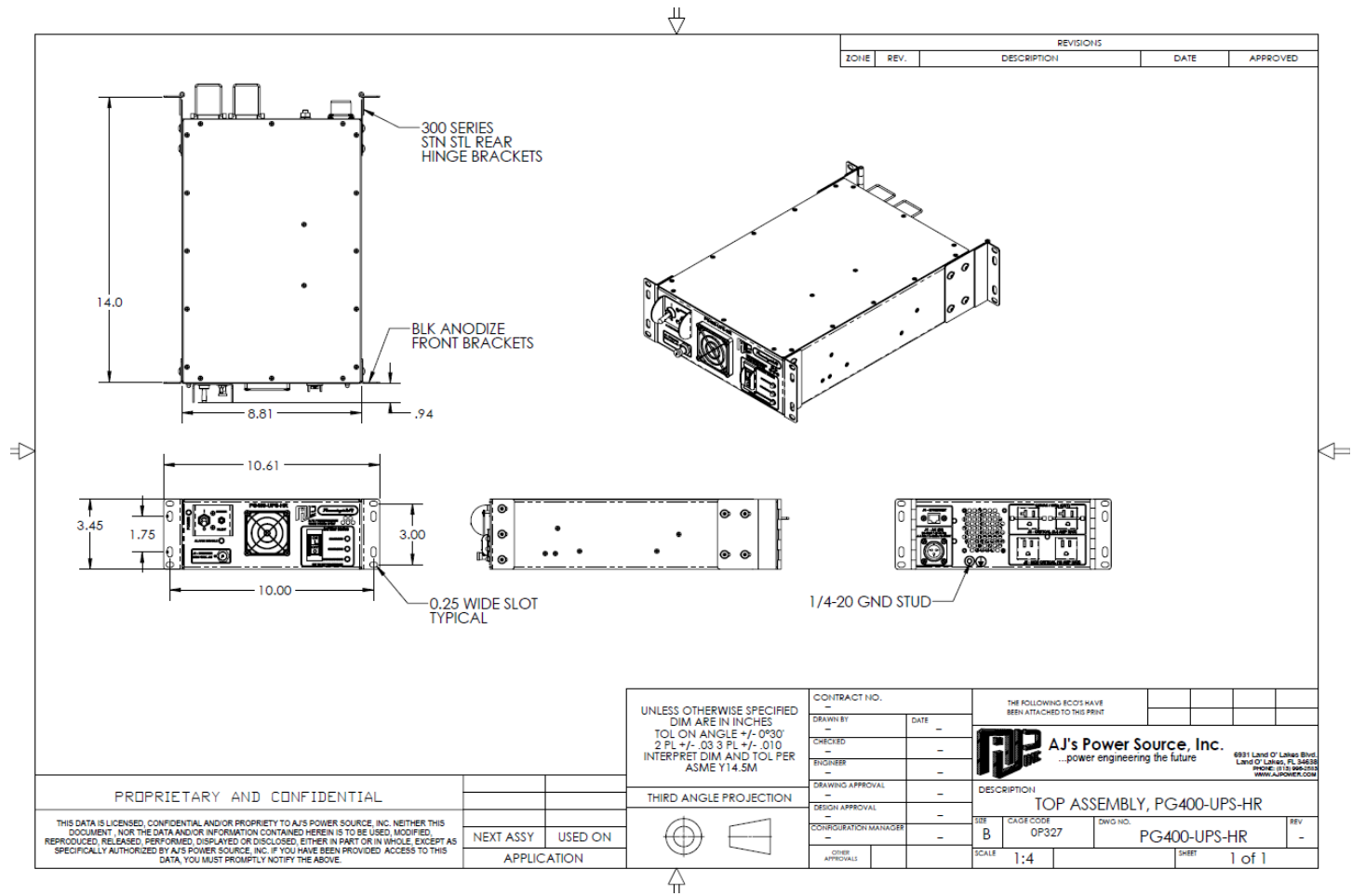
SPECIFICATION	VALUE	UNITS
Physical Properties		
Dimensions	3.45H x 8.81W x 13D	inch
Mounting	2U Height, 14 Inch Depth, Half Rack	
Mounting Hardware	Front Front/Hinged Rear Brackets	
Weight	12.0	lbs.
Material - Chassis	Aluminum	
Color/Finish - Chassis	Black #F63-B70 / Light Texture	
Color/Finish - Brackets	Front Black Anodized / Rear Unfinished Stainless Steel	



**PG400-UPS-HR
Front View**



**PG400-UPS-HR
Rear View**



UNLESS OTHERWISE SPECIFIED DIM ARE IN INCHES TOL ON ANGLE +/- .090° 2 PL +/- .03 3 PL +/- .010 INTERPRET DIM AND TOL PER ASME Y14.5M	CONTRACT NO.		THE FOLLOWING SCOS HAVE BEEN ATTACHED TO THIS PRINT	
	DRAWN BY			
	CHECKED		AJ's Power Source, Inc. ...power engineering the future. <small>6931 Land O Lakes Blvd Land O Lakes, FL 34638 PHONE: (813) 996-2583 WWW.AJPOWER.COM</small>	
	ENGINEER			
	DRAWING APPROVAL		DESCRIPTION	
	DESIGN APPROVAL		TOP ASSEMBLY, PG400-UPS-HR	
CONFIGURATION MANAGER		SER B	CAGE CODE OP327	DWG NO. PG400-UPS-HR
OTHER APPROVALS		SCALE 1:4	SHEET 1 of 1	

PROPRIETARY AND CONFIDENTIAL				
THIS DATA IS LICENSED, CONFIDENTIAL AND/OR PROPRIETY TO AJS POWER SOURCE, INC. NEITHER THIS DOCUMENT, NOR THE DATA AND/OR INFORMATION CONTAINED HEREIN IS TO BE USED, MODIFIED, REPRODUCED, RELEASED, PERFORMED, DISPLAYED OR DISCLOSED, EITHER IN PART OR IN WHOLE, EXCEPT AS SPECIFICALLY AUTHORIZED BY AJS POWER SOURCE, INC. IF YOU HAVE BEEN PROVIDED ACCESS TO THIS DATA, YOU MUST PROMPTLY NOTIFY THE ABOVE.	NEXT ASSY	USED ON		
	APPLICATION			

PG400-UPS-HR Mechanical Drawing