

Document Number: 130211JL-1	Originator: Jon Landau	Date: May 21st, 2020
-----------------------------	------------------------	----------------------

Data Sheet
PG1500-UPS-V3 Rev B



Document Number: 130211JL-1	Originator: / Sign:	Approved By: / Sign:
-----------------------------	---------------------	----------------------

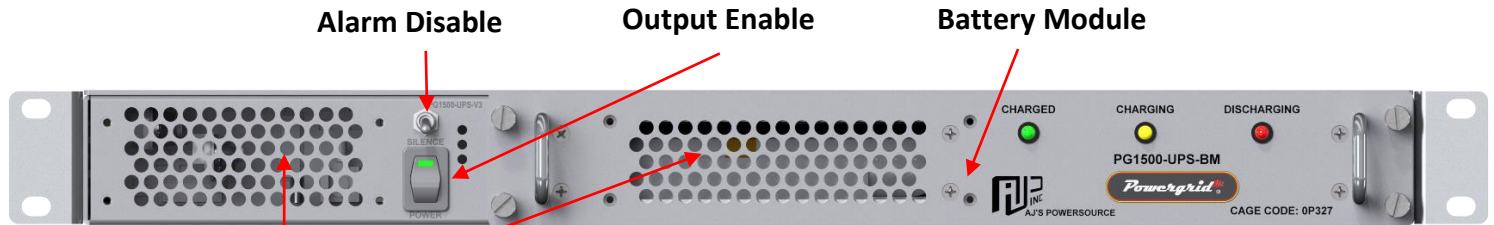
Warning: This document may contain technical data whose export is restricted by the Arms Export Control Act (Title 22, U.S.C. Sec 2751, et seq.) or the Export Administration Act of 1979, as amended (Title 50, U.S.C., app. 2401 et seq.) Violators of these export laws are subject to severe criminal penalties.
Proprietary Data: The data disclosed in this document was originated in whole or in part by AJPS Inc. and is to be utilized only for the specific purposes for which it was supplied. It is not to be disclosed, transmitted or reproduced without the prior written consent of AJPS Inc.

Creation Date: 07 May 2012	Reference ECO:	Document Number Rev Level:
----------------------------	----------------	----------------------------

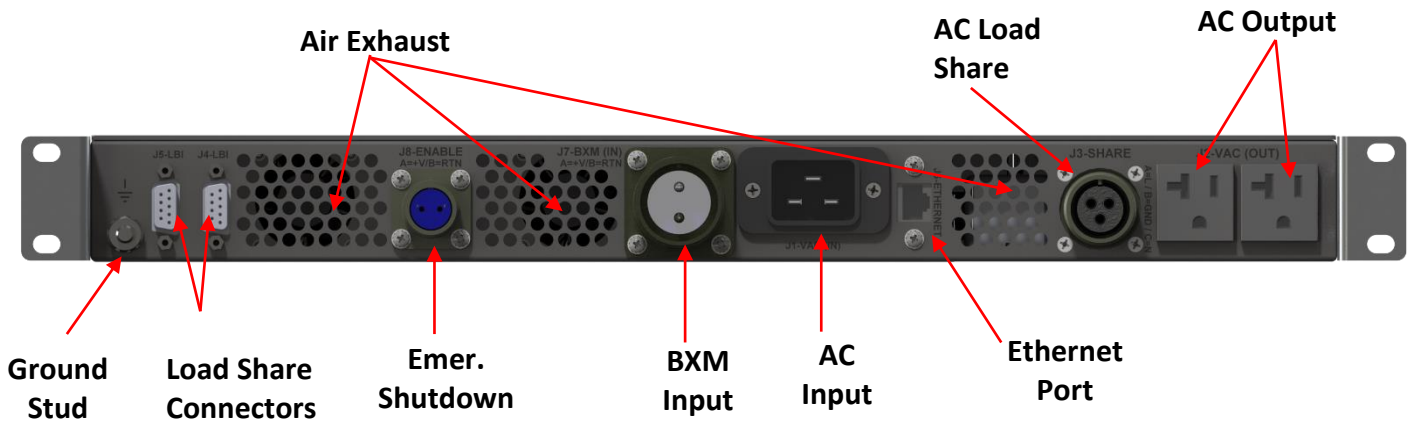
SPECIFICATION	VALUE	UNITS
AC Output		
Rated Voltage	120 Pure Sine Wave ($\pm 5\%$)	Volts
Frequency	60 ($\pm 0.25\%$)	Hertz
Rated Max. Current	10	Amps
Maximum Rated Power	1500VA (0.8PF), 1200W (w/resistive load)	
Phase	Single	
Total Harmonic Distortion	<5 (w/resistive load)	%
Run Time on Battery	>12 (at 25°C, 80% Load, zero at or below 0C)	Minutes
Transfer Time to Battery	Instant, On-Line conversion, Internal Ac/Dc converter provides full power down to 85Vac input, below 85Vac input, internal batteries support the load.	
AC Input		
Voltage Range	100 – 264	Volts AC
Nominal Voltage	115/230	Volts AC
Frequency Range	47 – 63, 100-264Vac	Hertz
Nominal Current	14 @ 115V	Amps AC
Inrush Current (typical)	50	Amps AC
Power Factor (typical)	>0.98 @ 230VAC (full load)	
Leakage Current	<3 @ 230VAC	mAmps AC
Efficiency (typical)	>80 @ 120VAC (Input to Output)	%
Conversion	Double	
Battery		
Rating	48	Vdc
Type	Lithium Iron Phosphate	
Capacity	5.7	Ah
Hot-Swappable	Yes (when on AC Input)	
Replacement Time	Less than one minute	
Recharge Time	5 Hours to 95% after full discharge	
BXM Input		
Voltage Range	41 – 56 (Minimum Input Voltage Turn-ON ≥ 42 VDC)	Vdc
Nominal Voltage	48	Vdc
Nominal Current	60	Adc
Inrush Current (typical)	120@48V	Adc
Efficiency (typical)	>84	%
Conversion	Single	

SPECIFICATION	VALUE	UNITS
Front Panel Indicators		
Battery Status	Green=Charged, Yellow=Charging, Red=Discharging	
Switch LED	Green=Unit On	
Front Panel Control		
On/Off Switch	When on, enables UPS output	
Alarm Disable	Enable/disable the audible alarm sounder	
SNMP v3		
Features	AC Input present, Battery Status (charged, charging, discharging), AC Output Active, Over Temperature, Traps pushed at prescribed intervals instead of on change only	
Version	2.2.0C	
Rear Connectors		
AC Output	2 x NEMA 5-15/20R receptacles	J2
AC Input	IEC 320/C20 male receptacle	J1
AC Load Share*	Type MS3102E16-10S Pin A = Line, Pin B = Ground, Pin C = Neutral	J3
Load Share Interface*	Female Sub-D 9 Pin	J4, J5
	* Allows units to be stacked for increase in power handling capability, provides synchronization between units (not used in single UPS installation)	
Ethernet	RJ-45, standard Ethernet pin out (SNMP communications)	J6
Emergency Cutoff	MS3102E12S3S, Pin A = +24, Pin B = Common Contact closure Open = output enabled, Closed via external switch = output disabled	J8
BXM Input	MS3102E20-23P, Pin A = +Vin, Pin B = -Vin (only used when PG-BXM is present)	J7
Safety Ground Stud	¼ -20 Stud (Rear Panel)	
Protection		
Over Load	Yes	
Output Short Circuit	Yes	
Over Temperature	Yes	
AC Input Protection	Yes	
Isolation		
AC Input to AC Output	Yes, Double	
BXM Input to AC Output	Yes, Double	

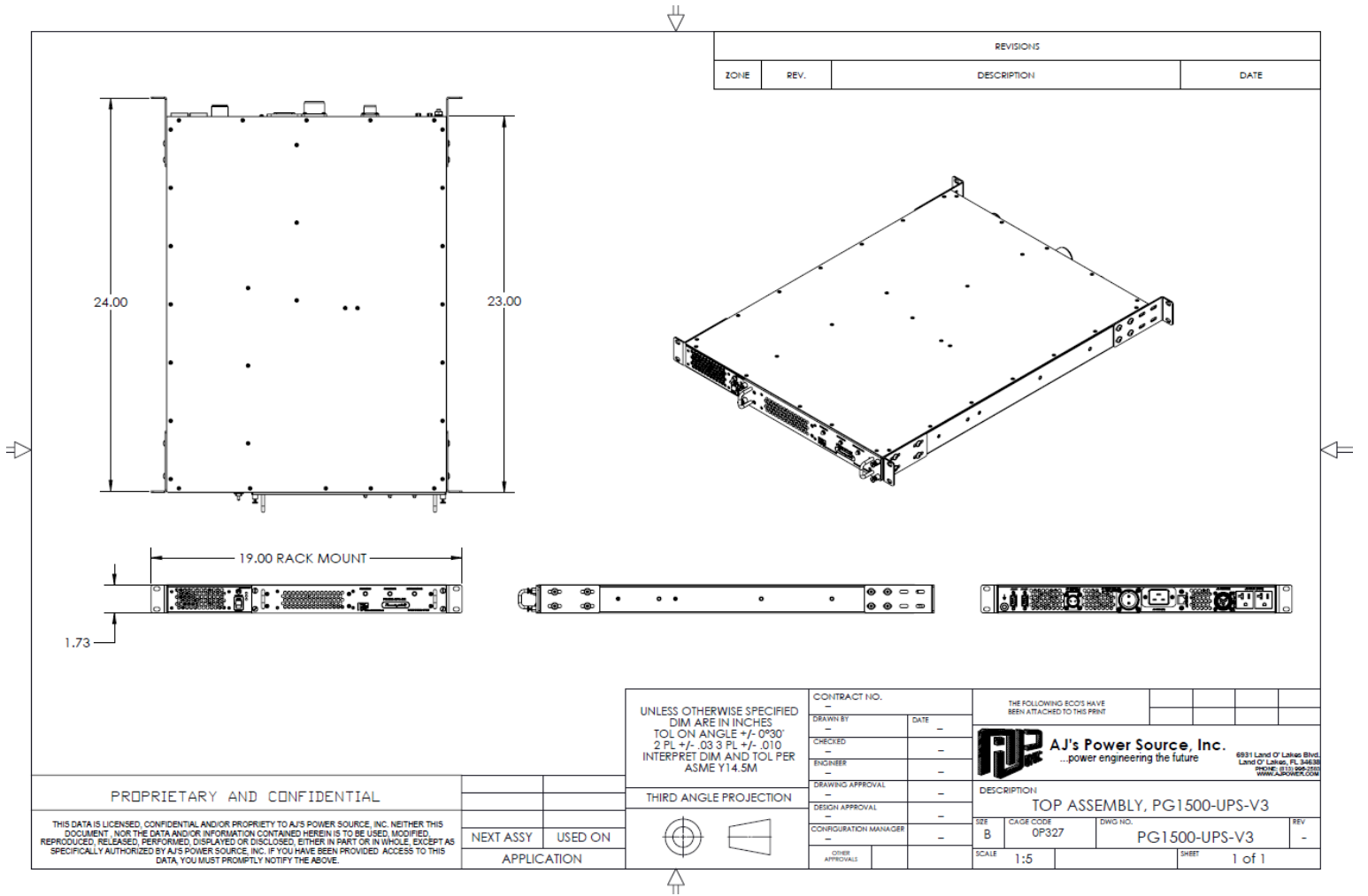
SPECIFICATION	VALUE	UNITS
Environmental		
Operating Temperature Range	-20 to +50 (see derating curve below)*	°C
Storage Temperature Range	-40 to +85*	°C
Working Humidity	95 non-condensing*	%
Altitude	10, 000 (Operating) Derate by 25% (900W) at 15,000 / 40,000 (Non-Operating)*	feet
Fungus	MIL-STD-810G, method 508*	
Sand and Dust	MIL-STD-810G* (w/Optional Filters)	
Vibration	MIL-STD-810G*	
Functional Shock	MIL-STD-810G*	
	* Designed to meet, lab testing required for formal certification	
Physical Properties		
Dimensions	1.735H x 17.1W x 23D	inch
Mounting	1U 19 Inch Rack (adjustable mounting depth)	
Weight	27	lbs.
Material	Aluminum	
Color/Finish	Gray	



Front View



Rear View



UNLESS OTHERWISE SPECIFIED DIM ARE IN INCHES TOL ON ANGLE +/- 0°30' 2 PL +/- .03 3 PL +/- .010 INTERPRET DIM AND TOL PER ASME Y14.5M	CONTRACT NO.		THE FOLLOWING ECOS HAVE BEEN ATTACHED TO THIS PRINT	
	DRAWN BY	DATE		
	CHECKED			
	ENGINEER			
	DRAWING APPROVAL			
	DESIGN APPROVAL			
CONFIGURATION MANAGER				
OTHER APPROVALS				

PROPRIETARY AND CONFIDENTIAL		
THIS DATA IS LICENSED, CONFIDENTIAL AND/OR PROPRIETY TO AJ'S POWER SOURCE, INC. NEITHER THIS DOCUMENT, NOR THE DATA AND/OR INFORMATION CONTAINED HEREIN IS TO BE USED, MODIFIED, REPRODUCED, RELEASED, PERFORMED, DISPLAYED OR DISCLOSED, EITHER IN PART OR IN WHOLE, EXCEPT AS SPECIFICALLY AUTHORIZED BY AJ'S POWER SOURCE, INC. IF YOU HAVE BEEN PROVIDED ACCESS TO THIS DATA, YOU MUST PROMPTLY NOTIFY THE ABOVE.	NEXT ASSY	USED ON
	APPLICATION	

AJ's Power Source, Inc. ...power engineering the future <small>6931 Land O Lakes Blvd, Land O Lakes, FL 34638 PHONE: 813.996.2583 WWW.AJPSOURCE.COM</small>			
DESCRIPTION			
TOP ASSEMBLY, PG1500-UPS-V3			
REV	CAGE CODE	DWG NO.	REV
B	0P327	PG1500-UPS-V3	-
SCALE 1:5		SHEET 1 of 1	

Mechanical Drawing