

Document Number: 121018JL-1	Originator: Jon Landau	Document Date: July 3rd, 2020
	Model Number: PG3000-UPS-230	Current Revision: B



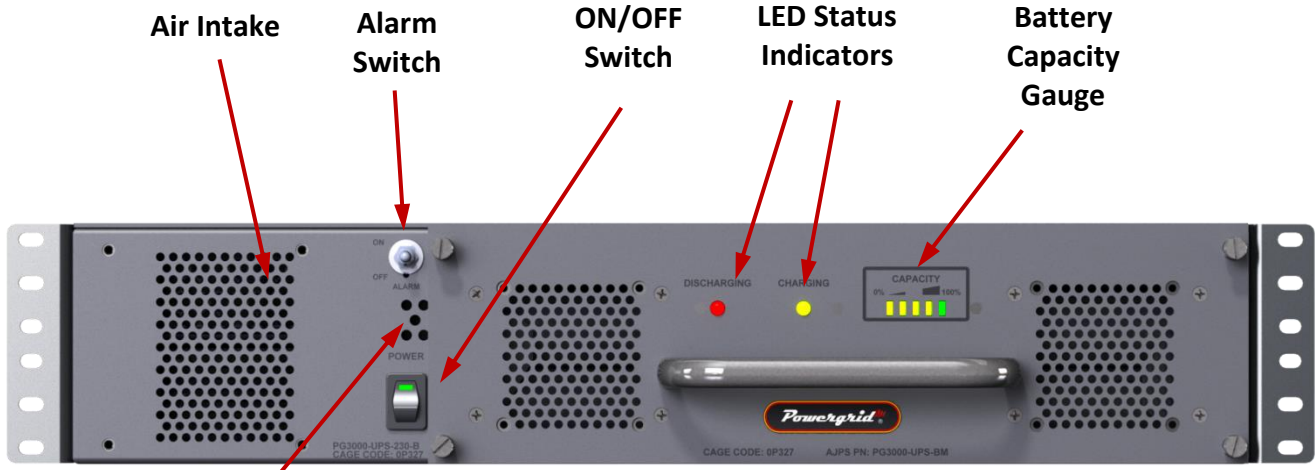
Originator (Sign): Jon Landau	Approved By (Sign): Eugene Unghire
-------------------------------	------------------------------------

Warning: This document may contain technical data whose export is restricted by the Arms Export Control Act (Title 22, U.S.C. Sec 2751, et seq.) or the Export Administration Act of 1979, as amended (Title 50, U.S.C., app. 2401 et seq.) Violators of these export laws are subject to sever criminal penalties.
 Proprietary Data: The data disclosed in this document was originated in whole or in part by AJPS Inc. and is to be utilized only for the specific purposes for which it was supplied. It is not to be disclosed, transmitted or reproduced without the prior written consent of AJPS Inc.

SPECIFICATION	VALUE	UNITS
AC Output		
Rated Voltage	230 True Sine Wave ($\pm 3\%$)	Volts
Frequency	50 ($\pm 0.5\%$)	Hertz
Rated Max. Current Continuous	10 (RMS, 1.0 PF)	Amps
Maximum Output Power	125% under temperature control 150% for maximum 20 seconds	
Current Range	0 – 10	Amps
Max. Rated Power	3000	VA
	2400	Watts
Total Harmonic Distortion	<3% (w/resistive load)	%
Run Time on Battery	>26 (1000W Load) >30 (900W Load) >33 (800W Load) >38 (700W Load)	Minutes
Start Time	<30	Seconds
AC Input		
Voltage	100 - 264	Volts AC
Phase	Single (Line to Neutral) or Dual (Line to Line)	
Frequency Range	47-63	Hertz
Nominal Current	15@208V	Amps AC
Inrush Current (typical)	100 (maximum)	Amps AC
Power Factor (typical)	>0.95	
Leakage Current	<4.0	mAmps AC
Efficiency (typical)	>80	%
Conversion	Double On-Line	
Battery		
Rating	48	Vdc
Type	Lithium Iron Phosphate	
Capacity	11.4	Ah
Hot-Swappable	Yes (when on AC Input)	
Replacement Time	Less than one minute	
Recharge Time	5 Hours to 95% after full discharge	
DC Input		
Nominal Voltage	48	Volts DC
Nominal Current	60	Amps DC

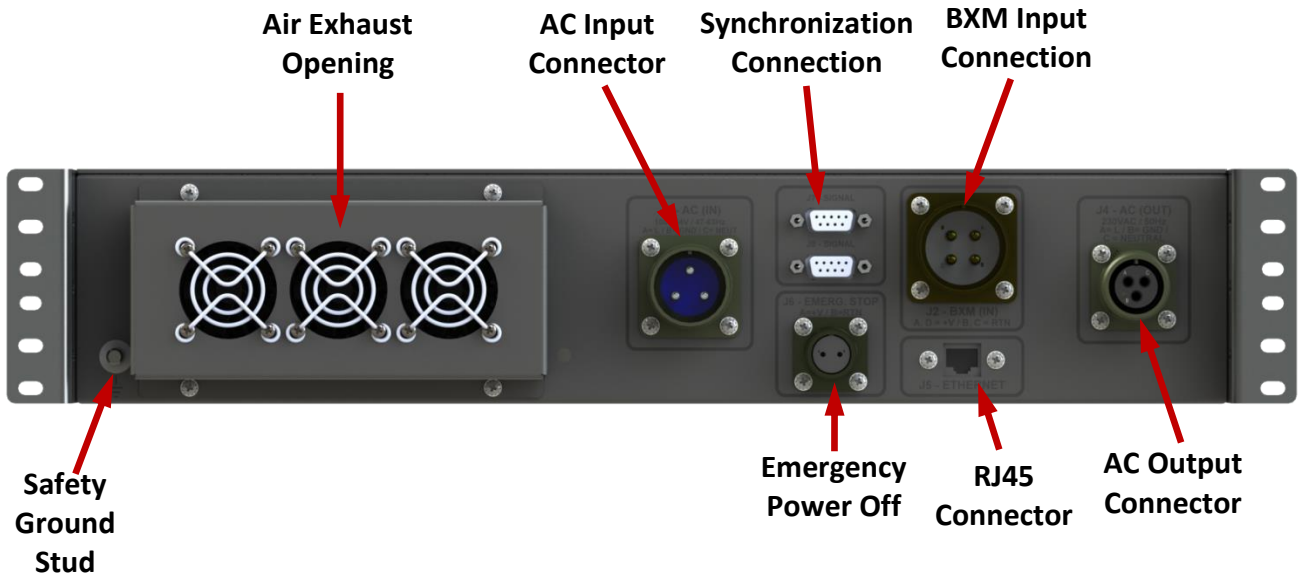
SPECIFICATION	VALUE	UNITS
Isolation		
AC Input to AC Output	3,000	Vac
DC Input to AC Output	4,242/1 min.	Vdc
Protection		
Over Load	Yes	
Output Short Circuit	Yes	
Over Temperature	Yes	
AC Input Protection	Yes	
DC Input Protection	Yes	
Environmental		
Operating Temperature Range	0 to +55* (load limited to 1000W)	°C
Storage Temperature Range	-40 to +85*	°C
Working Humidity	0 to 95, non-condensing*	%
Altitude	10, 000 (Operating) / 40,000 (Non-Operating)*	feet
Vibration	MIL-STD-810G*	
Functional Shock	MIL-STD-810G*	
Ingress Protection Rating	50	
EMI		
	MIL-STD-461G	
Conducted Emissions	CE102*	
Radiated Emissions	RE102*	
Conducted Susceptibility	CS101*, CS114*/115*/116*	
Radiated Susceptibility	RS103*	
	* Design to meet, lab testing required for formal certification	
Connectors		
AC Output	MS3102E20-19S, A=Line, B=Ground, C=Neutral	J4
AC Input	MS3102E20-19P, Pin A = Line, Pin B = Ground, Pin C = Line	J1
DC Input	MS3102E22-22P, Pin A,D = +Vin, Pin B,C = Vin Return	J2
Ethernet	Standard RJ-45 connection (J5)	J5
Emergency Power Off	MS3102E12S-3S, A = +V, B = RTN, Normally open contact, requires external switch closure to disable output	J6
Synchronization*	Standard 9 pin Sub-D	J7, J8
	*Allows two or more PG3000's to be linked together.	

SPECIFICATION	VALUE	UNITS
Physical Properties		
Safety Ground Stud	¼ x 20 Thread	
Dimensions	3.48H x 17.1W x 24.0D (Not including Handles or Rack Mounts)	inch
Mounting	2U 19 Inch Rack	
Weight	~50	lbs.
Material	Aluminum	
Color / Finish	Gray / Light Texture	
Remote Status		
Status Monitoring	SNMP v1	
	Status: AC Input Present, AC Output, Battery Charged, Battery Charging, Battery Discharging, Temp. Warning	

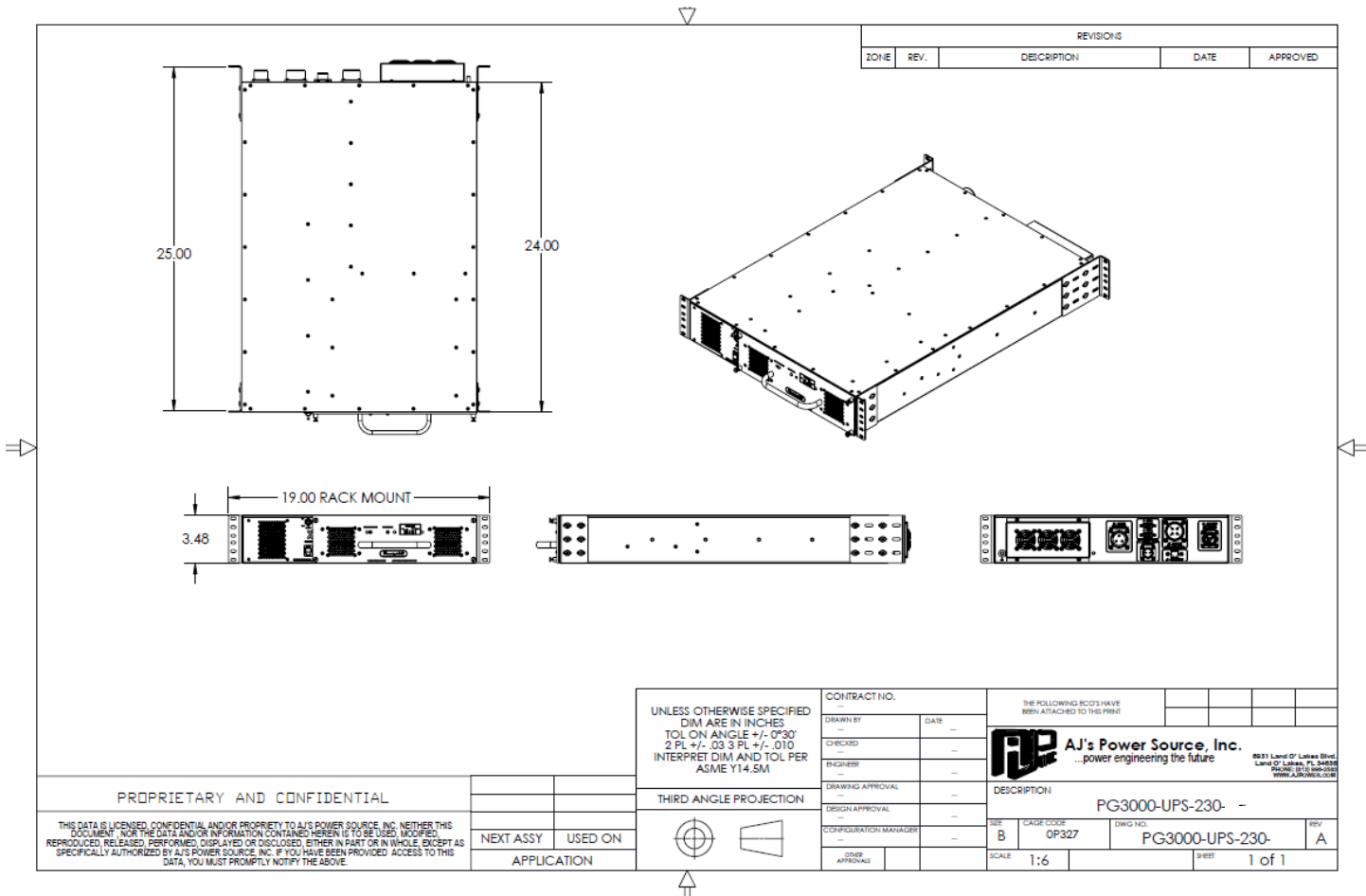


Alarm Port

Front View
 PG3000-UPS-230



Rear View
 PG3000-UPS-230



**Mechanical Drawing
 PG3000-UPS-230**