

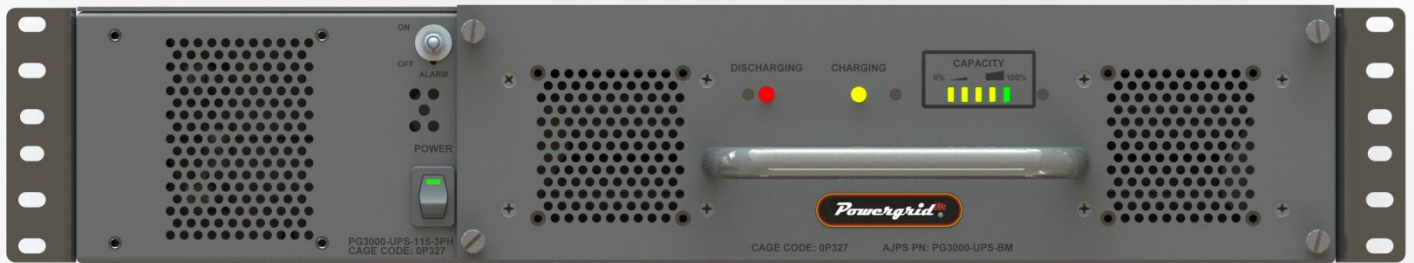
Document Number: 130211JL-1

Originator: Jon Landau

Date: March 23rd, 2022

Data Sheet

PG3000-UPS-3P-440



Document Number: 130211JL-1

Originator: / Sign:

Approved By: / Sign:

Warning: This document may contain technical data whose export is restricted by the Arms Export Control Act (Title 22, U.S.C. Sec 2751, et seq.) or the Export Administration Act of 1979, as amended (Title 50, U.S.C., app. 2401 et seq.) Violators of these export laws are subject to severe criminal penalties.
Proprietary Data: The data disclosed in this document was originated in whole or in part by AJPS Inc. and is to be utilized only for the specific purposes for which it was supplied. It is not to be disclosed, transmitted or reproduced without the prior written consent of AJPS Inc.

SPECIFICATION	VALUE	UNITS
AC Output		
Rated Voltage	120 True Sine Wave ($\pm 3\%$)	Volts
Frequency	60 ($\pm 0.5\%$)	Hertz
Rated Max. Current Continuous	20 (RMS, 1.0 PF)	Amps
Maximum Output Power	125% under temperature control 150% for maximum 20 seconds	
Current Range	0 – 20	Amps
Max. Rated Power	3000	VA
	2400	Watts
Total Harmonic Distortion	<3% (w/resistive load)	%
Run Time on Battery	>12 (@ 25C, 80% load, zero at or below 0C)	Minutes
AC Input		
Voltage Range	440, 3 Phase	Volts AC
Frequency Range	47/63	Hertz
Nominal Current	4/phase	Amps AC
Inrush Current (typical)	100 (maximum)	Amps AC
Power Factor (typical)	>0.8@115VAC (full load)	
Leakage Current	<4.0	mAmps AC
Efficiency (typical)	~80 (Input to Output)	%
Conversion	Double On-Line	
BXM Input		
Voltage Range	41 – 56	Volts DC
Nominal Voltage	48	Volts DC
Nominal Current	60	Amps DC
Efficiency (typical)	>84	%
Conversion	Single	
Isolation		
AC Input to AC Output	3,000 minimum	VAC
Printed Circuit Board Coating		
	Conformal coating	
Battery Technology		
	Lithium Iron Phosphate (LiFePO ₄) packs	
	51.2V/11.4Ah rating total	

SPECIFICATION	VALUE	UNITS
Remote Status		
Signal Monitoring	SNMPv3	
	Status: AC Present, AC Output, Battery Charged, Battery Charging, Battery Discharging, Over Temp Warning	
Environmental		
Operating Temperature Range	-20 to +50C*	°C
Storage Temperature Range	-40 to +85*	°C
Working Humidity	0 to 95, non-condensing*	%
Altitude	10, 000 (Operating) / 40,000 (Non-Operating)*	feet
Sand and Dust	MIL-STD-810G (w/Optional Filters)*	
MIL-STD 461F*	RE102, CE102, CS114-116, CS101 & RS103	
Vibration	MIL-STD-810G *	
Fungus	No fungus promoting materials are used	
Functional Shock	MIL-STD-810G *	
Vibration	MIL-STD-810G*	
	* Designed to meet these environments, Demonstrated or Lab testing optional	
Other Specifications		
Alarm	Audible AC Power Loss (w/Disable)	
Cooling	Front Panel Intake & Rear Exhaust Airflow	
Connectors		
AC Output	1 x MSS3102E16-10S Pin A= Line, Pin B= Ground, Pin C= Neutral 4 x NEMA 5-20R	J7 J3-6
AC Input	1 x MS3102E16S-8P Pin A=Phase A, Pin B=Phase B, Pin C=Phase C, Pin D=Neutral, Pin E= Earth Ground	J1
Ethernet	Standard RJ-45 connection	J8
BXM/DC Input	1 x MS3102E32-17P Pin A,D = +Vin, Pin B,C = Vin Return	J2
Synchronization Connectors	9 Pin Sub-D	J10-11
Emergency Cut Off	1 x MS3102E12S-3S (normally open circuit, short pins to disable UPS output)	J9
Dimensions	3.48H x 17.10W x 24.00D (Not including Handles, Rack Mounts, or Fan Box)	inch
Mounting	2U 19 Inch Rack	
Weight	~50	lbs.
Material	Aluminum	
Color / Finish	Gray / Light Texture	
Ground Stud	¼" x 0.5 inch, use 1/4" ID Ring Terminal, 18AWG Minimum	

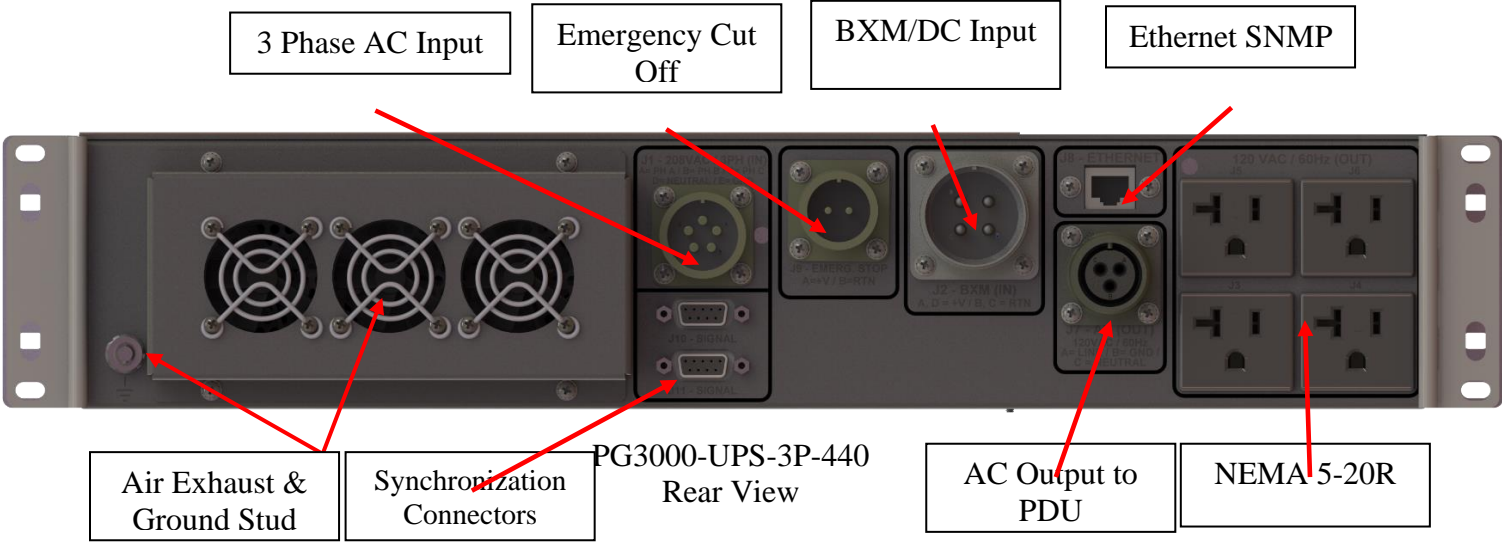


Air Intake

On/off and alarm switch

Battery module with battery status and capacity meter

PG3000-UPS-3P-440
Front View



3 Phase AC Input

Emergency Cut Off

BXM/DC Input

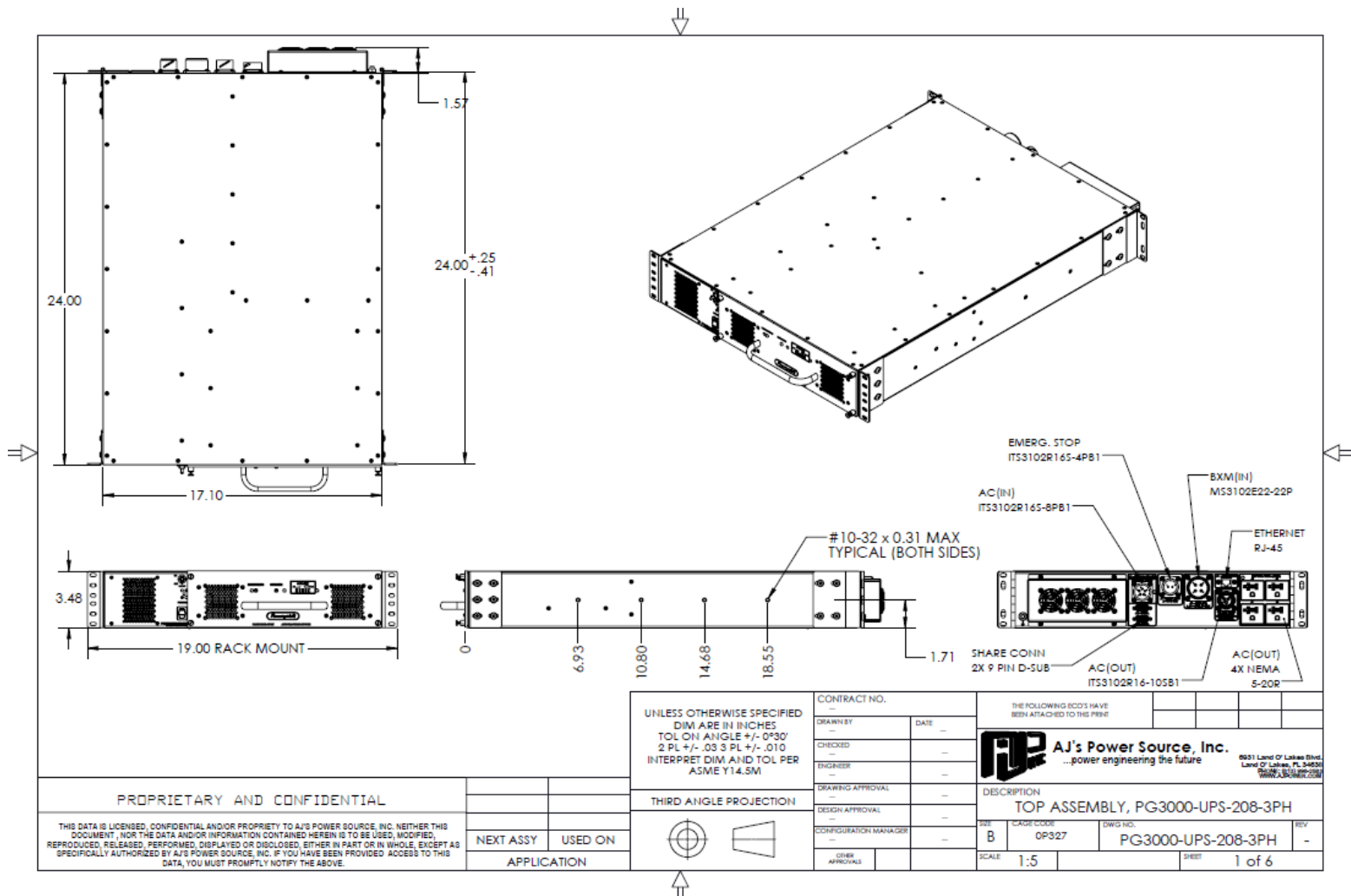
Ethernet SNMP

Air Exhaust & Ground Stud

Synchronization Connectors

AC Output to PDU

NEMA 5-20R



PG3000-UPS-3P-440
Mechanical Drawing
(PG3000-UPS-208-3PH shown, only difference is model number)