

AJPS INC.  
6931 Land O Lakes Blvd  
Land O Lakes FL 34638  
813-996-2583

Doc. Name: PG3000-UPS-3PH

Form Number: 690-0940-00

Procedure Number: XXX-XXXX-XX

Document Number: 130211JL-1

Originator: Jon Landau

Date: June 25<sup>th</sup>, 2015

Data Sheet

900-0XXX-00

PG3000-UPS-3PH



Document Number: 130211JL-1

Originator: / Sign:

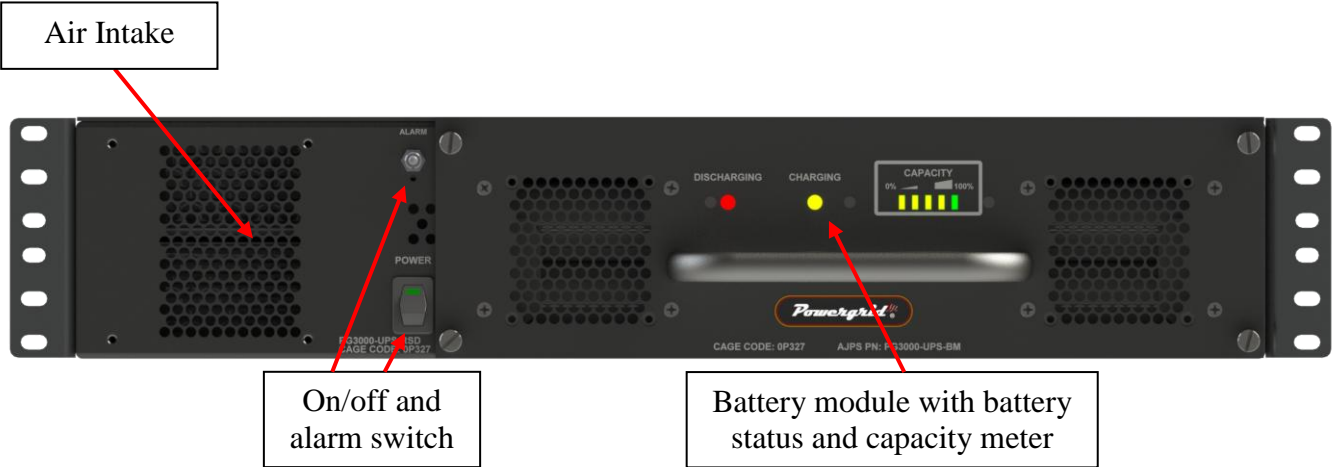
Approved By: / Sign:

Warning: This document may contain technical data whose export is restricted by the Arms Export Control Act (Title 22, U.S.C. Sec 2751, et seq.) or the Export Administration Act of 1979, as amended (Title 50, U.S.C., app. 2401 et seq.) Violators of these export laws are subject to severe criminal penalties.  
Proprietary Data: The data disclosed in this document was originated in whole or in part by AJPS Inc. and is to be utilized only for the specific purposes for which it was supplied. It is not to be disclosed, transmitted or reproduced without the prior written consent of AJPS Inc.

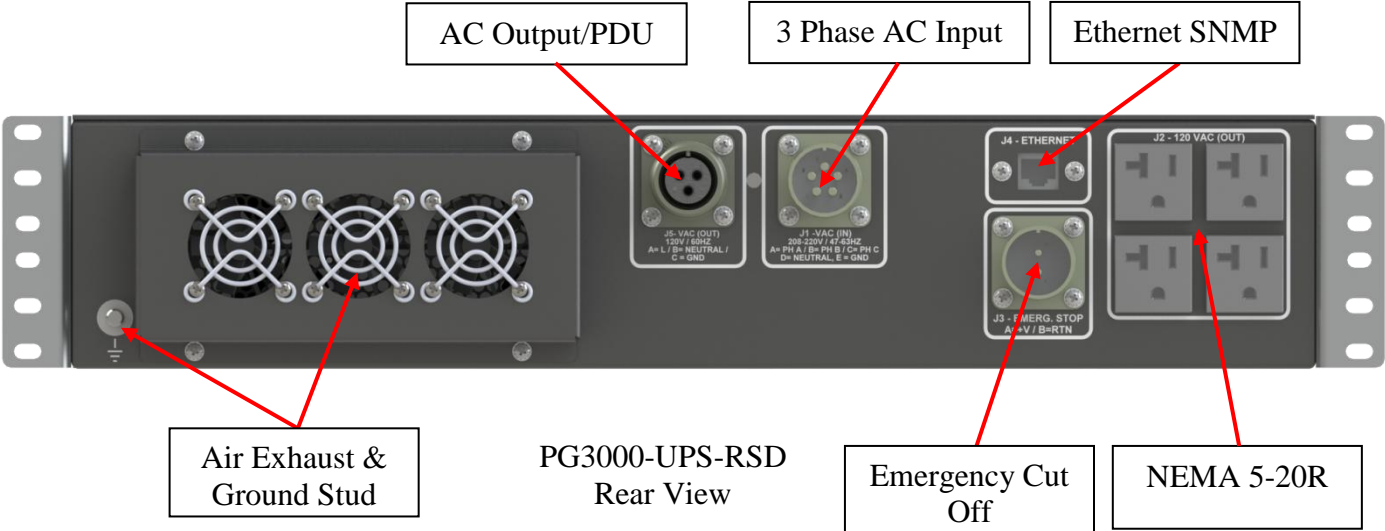
SPECIFICATION	VALUE	UNITS
<b>AC Output</b>		
Rated Voltage	120 True Sine Wave ( $\pm 3\%$ )	Volts
Frequency	60 ( $\pm 0.5\%$ )	Hertz
Rated Max. Current Continuous	20 (RMS, 1.0 PF)	Amps
Maximum Output Power	125% under temperature control 150% for maximum 20 seconds	
Current Range	0 – 20	Amps
Max. Rated Power	3000	VA
	2400	Watts
Total Harmonic Distortion	3<% (w/resistive load)	%
Run Time on Battery	13 - 15 (@ 25C, 80% load, zero at or below 0C)	Minutes
<b>AC Input</b>		
Voltage Range	208 – 220, 3 Phase WYE	Volts AC
Frequency Range	47 – 63, 400 (400Hz, 115Vac only)	Hertz
Nominal Current	15 @ 208V	Amps AC
Inrush Current (typical)	100 (maximum)	Amps AC
Power Factor (typical)	>0.98 @ 115VAC / >0.95 @ 230VAC (full load)	
Leakage Current	<4.0 @ 230VAC	mAmps AC
Efficiency (typical)	>80 @ 120VAC (Input to Output)	%
Conversion	Double On-Line	
<b>Isolation</b>		
AC Input to AC Output	3,000 minimum	VAC
MTBF	>50,000 (Calculated Per MIL-HDBK-217)	Hours
<b>Printed Circuit Board Coating</b>		
	Urethane base conformal coating	

SPECIFICATION	VALUE	UNITS
<b>Environmental</b>		
Operating Temperature Range	Down to -30 if run from -20 or higher at full load, will start at -20 or higher with or without a load, up to +54 (75% Load Derating @+54), No UPS battery output under 0.	°C
Storage Temperature Range	-46 to +85	°C
Working Humidity	90, non-condensing*	%
Altitude	10, 000 (Operating) / 40,000 (Non-Operating)	feet
Sand and Dust	MIL-STD-810G (w/Filters)*	
Vibration	MIL-STD-810G, 514.6, CAT 5, 7, 8, 9, 24*	
Functional Shock	MIL-STD-810G, 516.6, Proc 1, 4, 6*	
<b>Connectors</b>		
AC Output	ITS3102R16-10SB1 Pin A= Line, Pin B= Neutral, Pin C= Ground 4 x NEMA 5-20R	J5 J2
AC Input	ITS3102R16S-8PB1 Pin A=Phase A, Pin B=Phase B, Pin C=Phase C, Pin D=Neutral, Pin E= Earth Ground	J1
Ethernet	Standard RJ-45 connection	J4
Emergency Cut Off	ITS3102R16S-4PB1 (normally open circuit, short pins to disable UPS output)	J3
Dimensions	3.48H x 17.1W x 24.0D (Not including Handles or Rack Mounts)	inch
Mounting	2U 19 Inch Rack	
Weight	~50	lbs.
Material	Aluminum	
Color / Finish	Black #F63-B70 / Light Texture	
Ground Stud	1/4" x 0.5 inch, use 1/4" ID Ring Terminal, 18AWG Minimum	
<b>Remote Status</b>		
Signal Monitoring	SNMPv1 or SNMPv3 (classified network)	
	Status: AC Present, DC Present, AC Output, Battery Charged, Battery Charging, Battery Discharging	
<b>Battery Technology</b>		
	Lithium Iron Phosphate (LiFePO4) packs	
	51.2V/10.4Ah rating total	

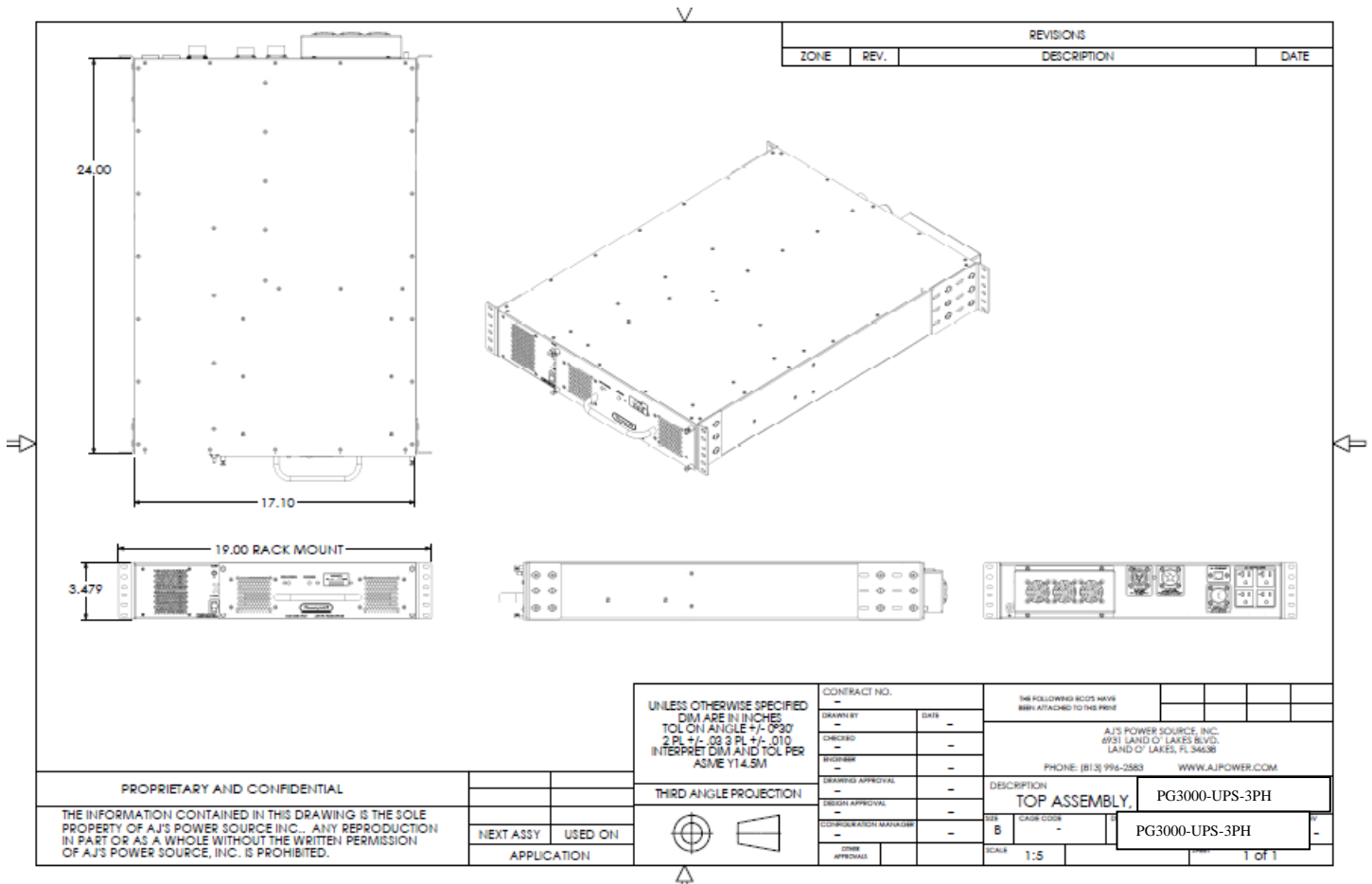
\* Designed to meet these environments, Demonstrated or Lab testing optional



PG3000-UPS-RSD  
Front View



PG3000-UPS-RSD  
Rear View



PG3000-UPS-3PH  
Mechanical Drawing