

Document Number: 130211JL-1

Originator: Jon Landau

Date: October 2nd, 2020

Data Sheet

PG3000-UPS-DC28-3P



Document Number: 130211JL-1

Originator: / Sign:

Approved By: / Sign:

Warning: This document may contain technical data whose export is restricted by the Arms Export Control Act (Title 22, U.S.C. Sec 2751, et seq.) or the Export Administration Act of 1979, as amended (Title 50, U.S.C., app. 2401 et seq.) Violators of these export laws are subject to severe criminal penalties.
Proprietary Data: The data disclosed in this document was originated in whole or in part by AJPS Inc. and is to be utilized only for the specific purposes for which it was supplied. It is not to be disclosed, transmitted or reproduced without the prior written consent of AJPS Inc.

Model: PG3000-UPS-DC28-3P, 2U 2400W UPS Module		
SPECIFICATION	VALUE	UNITS
DC Output		
Rated Voltage	28	Vdc
Rated Max. Current	86	Adc
Maximum Rated Power	2400	Watts
Run Time on Battery	10 - 12 (at 25°C, 2,000W Load, No backup output if internal batteries are at or below freezing (0°C/32°F))	Minutes
Transfer Time to Battery	Instant, On-Line conversion	
AC Input		
Voltage Range	108 to 118	Volts AC
Phase	Three	
Frequency Range	393 to 407	Hertz
Nominal Current	14-15/Phase (115Vac input)	Amps AC
Inrush Current (typical)	100 (maximum)	Amps AC
Power Factor (typical)	>0.9	
Leakage Current	<4.0	mAmps AC
Efficiency (typical)	>85 @ 115VAC (Input to Output)	%
Conversion	Double	
Front Panel Indicators		
Battery Status	Yellow=Charging, Red=Discharging, Capacity Meter	
Switch LED	Green=Unit On	
Front Panel Control		
On/Off Switch	When on, enables UPS output	
Rear Connectors		
DC Output	1 x MS3102E32-17S, Pin A,B = +28V, Pin C,D = DC Common	J3
AC Input	MS3102E18-11P Pin A=Phase A, Pin B= Phase B, Pin C=Phase C, Pin D=Neutral Pin E=Earth Ground	J1
SNMP (Remote Status)	1 x RJ-45	J6
Emergency Power Off	1 x MS3102E16S-4S (normally open circuit, short pins to disable UPS output)	J7
Safety Ground Stud	¼ -20 Stud (Rear Panel)	
Remote Status		
Signal Monitoring	SNMPv1	
	Status: AC Input Present, DC Output Present, Battery Charged, Battery Charging, Battery Discharging, Temp Status	
SPECIFICATION	VALUE	UNITS
Protection		

Over Load	Yes	
Output Short Circuit	Yes	
Over Temperature	Yes	
AC Input Protection	Yes	
Isolation		
AC Input to DC Output	Yes	
Color/Finish	Gray Textured Finish	
Environmental		
Operating Temperature Range	-20 to +50 (No backup output if internal batteries are at or below freezing (0°C/32°F), will provide output power down to -31°C when run down on primary input power from 0°C or above	°C
Storage Temperature Range	-40 to +70*	°C
Working Humidity	95 non-condensing*	%
Altitude	10, 000 (Operating) / 40,000 (Non-Operating)*	feet
Sand and Dust	MIL-STD-810G* (w/Optional Filters)	
Vibration	MIL-STD-810G*	
Functional Shock	MIL-STD-810G*	
	* Designed to meet, lab testing required at additional cost.	
Battery		
Technology	Lithium Iron Phosphate	
	22.8	Ah
	25.6	Vdc
Printed Circuit Board Coating		
	Conformal Coated	
Weight	~50	Pounds

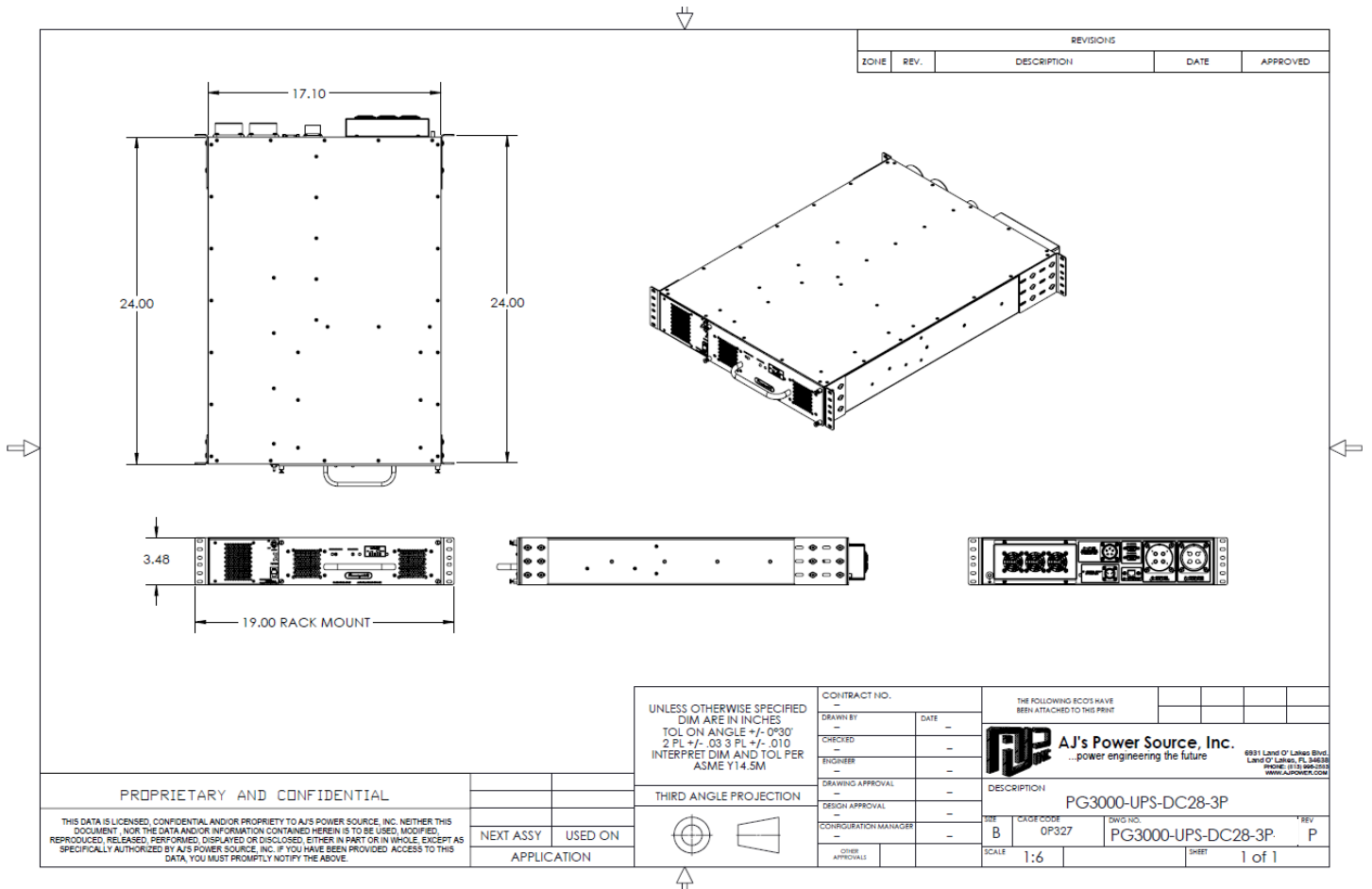


PG3000-UPS-DC28-3P
Front View



No DC input
No DC sync

PG3000-UPS-DC28-3P
Rear View



PG3000-UPS-DC28-3P Mechanical Drawing